



SOPHOMORES SURPRISE SENIORS

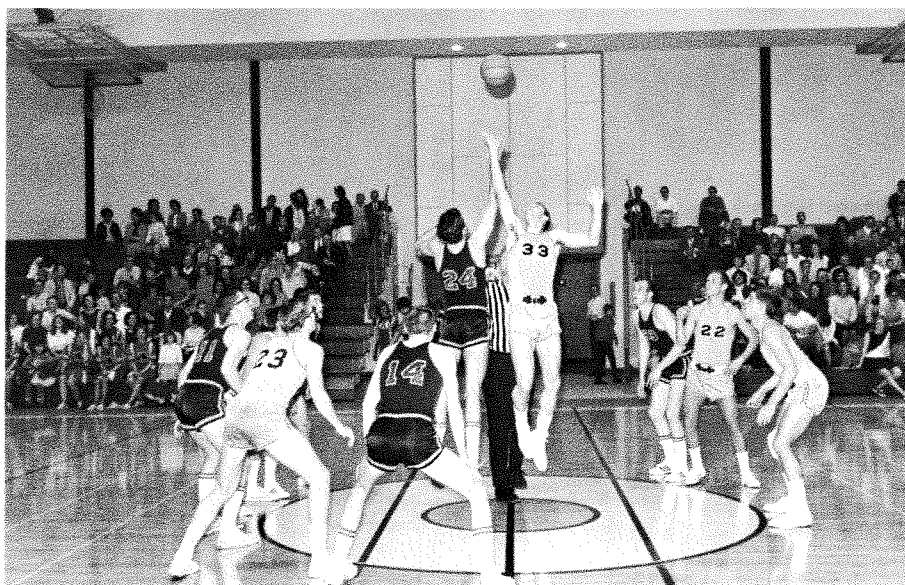
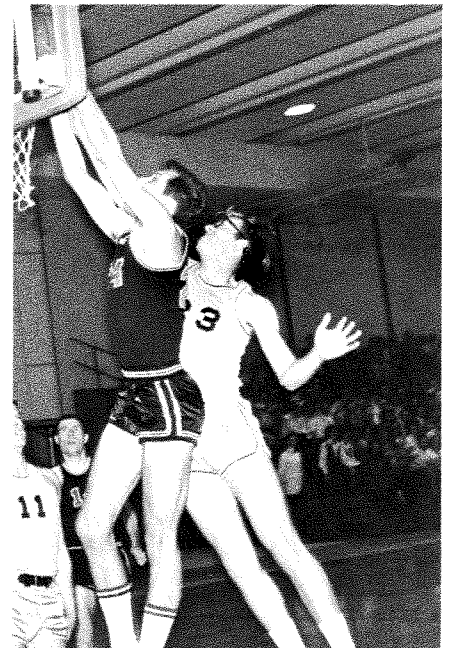
Soph Spearhead Ends in 95-91 Final Score

Saturday night everything went the Sophomore way — from the opening tip-off until the final shot it looked like the noble Seniors were in for an upset. The Sophs were red hot and up for the game against the highly favored Senior squad and managed through hustle and super tight defense to pull off the upset of the season. The Seniors were minus Al Barr and lost Royer and Pyle to fouls early in the second half. The Sophs, on the other hand, never looked better.

The game began with Voelmer out-jumping Royer for the tip — an ominous sign right from the beginning for the Seniors. The game stayed close and neither team could forge into the lead but the lack of Senior rebounding soon began to make its absence felt. The Sophomores began to scorch the

nets, amassing one of the highest shooting percentages they've had all season and pulled into the lead. The Seniors couldn't buy a rebound on defense and got only one shot each time down on offense — but their biggest problem was defense.

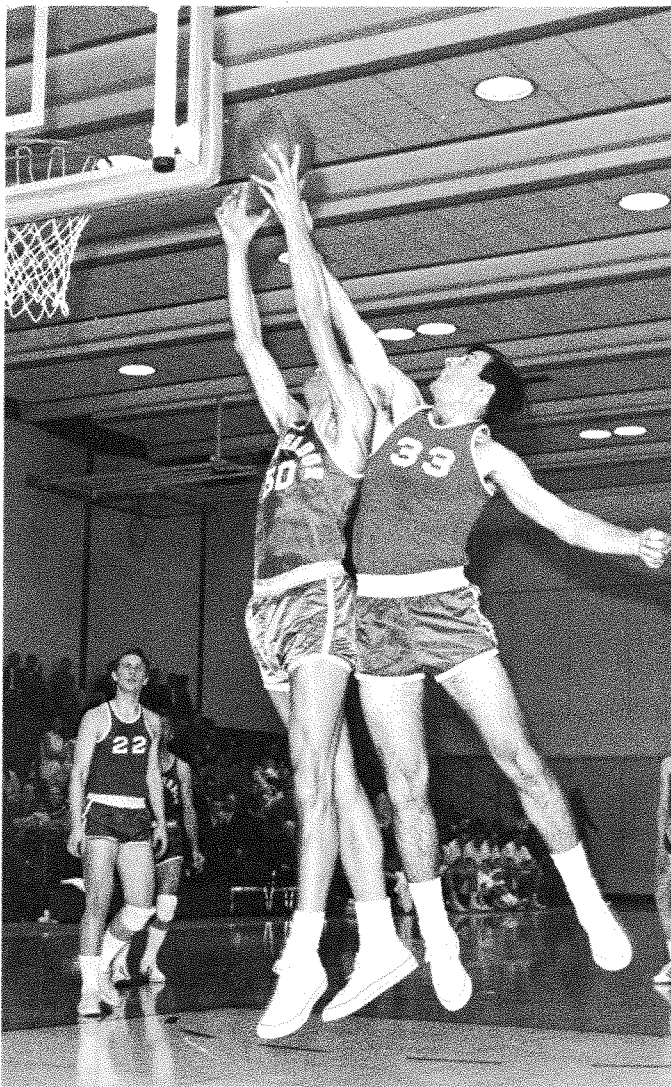
The Sophs, behind the sharp-shooting of Steve Gereaux, pulled out to a nine-point lead but then the Seniors made a charge back into the game as Orban stole the ball and started a series of fast breaks that ended in a four-point lead for the upperclassmen. The Sopho-



mores, however, were not to be stopped — this was their night! Koerner and Gereaux were popping every shot and the Sophs pulled back into the lead. The Sophomore defense was impenetrable forcing the Seniors to shoot from far outside and to lose the teamwork and ball control they usually have. By the end of the first half, the Seniors were buried 47-35 by the hustling Sophs.

The beginning of the second half only saw the Seniors fall back further as Virgil Riley went on a shooting spree and then to top things off, Scott Royer fouled out with 12 minutes still left to play. Surprisingly enough, the

(Continued on page 4)



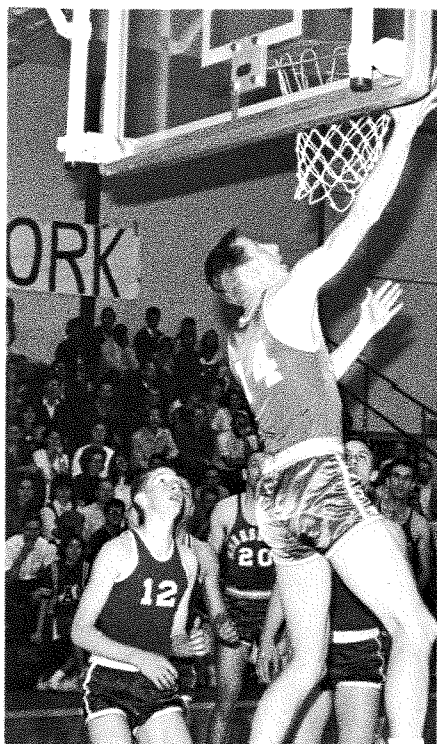
Faculty Teamwork

The league-leading Faculty with great teamwork and artful passing overpowered a scrappy Freshman team 87-60 last Saturday night. The Frosh were looking for their fifth consecutive victory but ran right into a brick wall in the person of Jim Petty. Mr. Petty scored 20 points and had 12 assists — 10 of them in the first half!

Mr. Petty opened the game with the first of his assists, a pinpoint pass to Gil Norman under the basket for two quick points. Jack Kost followed with a short Jumper to tie the score. The lead seesawed back and forth as the Freshmen played slow ball-control, looking for the percentage shot. This deliberate style of play seemed to be paying off, as the Freshmen hung right in there even though the Faculty were making breathtaking picture plays. With about ten minutes gone in the first half, the Freshmen were down by only 1 point. Then the Faculty broke the game wide open as Mr. Petty gave the Frosh a lesson in passing.

The Faculty fast break worked perfectly as Mr. Petty would bring the ball down, head-fake, and slice through for the basket — or pass off with pinpoint accuracy to an open man. His favorite receiver was Gil Norman, who laid in three quick baskets as the Faculty went on a tear, scoring 15 points to the Frosh's 3. It was Faculty 30, Freshmen 17.

With two minutes left in the first half, and the Frosh down by 13 points, the Big Red reeled off 4 straight baskets in quick succession to narrow the Faculty's lead to 5 points. Inglima twisted around a defender in his patented rubber-man shot, Ogwyn scored two layups, Kost swished one, and the Frosh were back in it 36-31. But just when the Frosh appeared



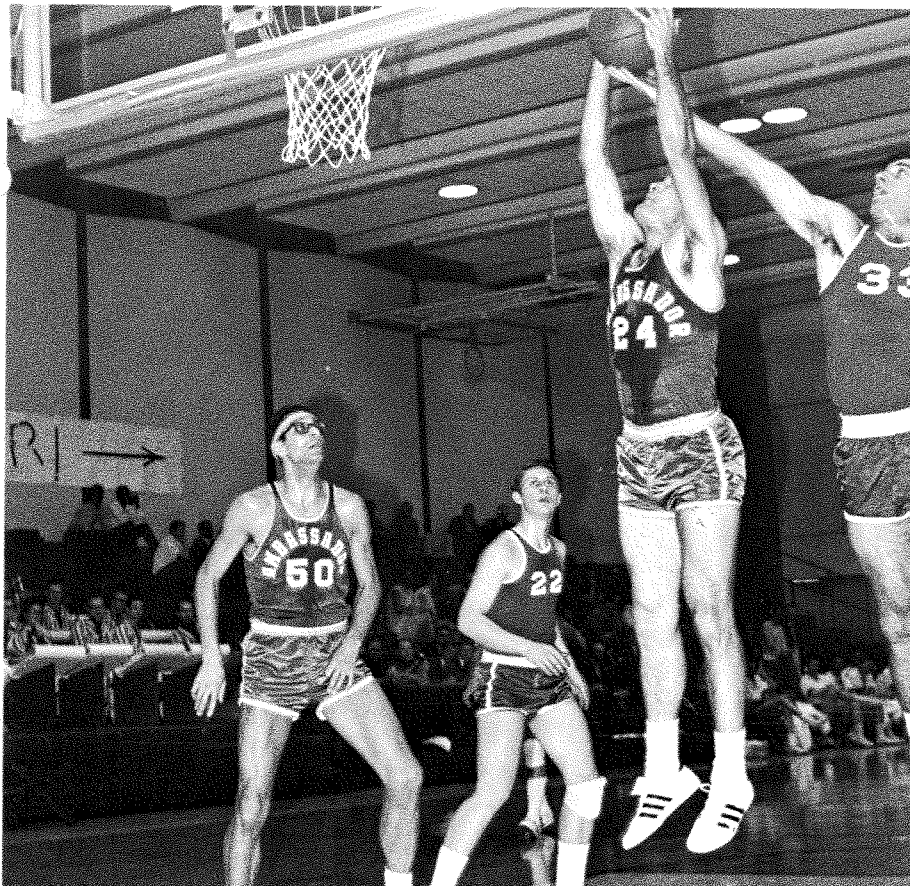
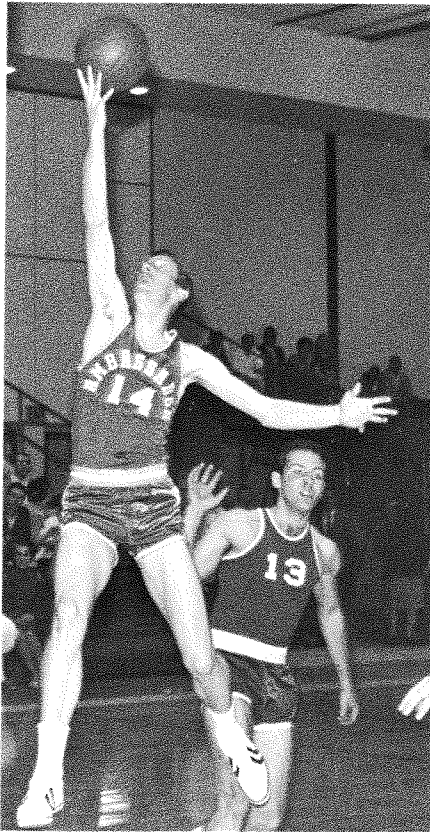
FACULTY: 87										
	FG-A	PCT	FT-A	PCT	AST	REB	PF	TP	AV	
Armstrong	3-10	.30	0-2	.00	4	1	2	6	..	
Petty	8-11	.73	4-4	1.00	12	7	0	20	..	
Williams	5-14	.36	3-3	1.00	4	12	4	13	..	
Norman	8-16	.50	2-4	.50	1	4	3	18	..	
Plache	3-7	.43	2-5	.40	1	16	2	8	..	
Whitfield	3-5	.60	0-1	.00	0	5	0	6	..	
Geis	3-4	.75	0-0	.00	0	2	0	6	..	
Michael	0-2	.00	3-4	.75	1	4	0	3	..	
Smith	1-1	1.00	0-0	.00	1	1	0	2	..	
Wilkinson	1-1	1.00	0-0	.00	0	2	0	2	..	
Antion	1-2	.50	0-0	.00	0	1	0	2	..	
Stephens	0-2	.00	1-2	.50	0	2	0	1	..	
TOTALS	36-75	.48	15-25	.60	24	57	12	87	..	
FRESHMEN: 60										
	FG-A	PCT	FT-A	PCT	AST	REB	PF	TP	AV	
Ogwyn	7-21	.33	2-3	.66	4	10	3	16	..	
Dennison	2-5	.40	1-1	1.00	1	2	1	5	..	
Kost	4-10	.30	2-2	1.00	0	14	3	10	..	
Inglima	9-22	.41	3-5	.60	3	8	3	21	..	
Garrett	2-6	.33	0-0	.00	1	3	5	4	..	
Tkach	0-3	.00	2-4	.50	0	5	1	2	..	
Turner	1-1	1.00	0-0	.00	1	0	1	2	..	
Masterson	0-1	.00	0-0	.00	0	0	0	0	..	
Bachelor	0-1	.00	0-0	.00	0	0	0	0	..	
Reagon	0-1	.00	0-0	.00	0	0	0	0	..	
Webber	0-0	.00	0-0	.00	0	1	0	0	..	
TOTALS	25-71	.35	10-15	.66	10	43	17	60	..	

Takes Frosh 87 to 60

to be able to make their move — enter Mr. Petty! He passed to Ben Whitfield who scored on a lay-up and then ended the first half the way he had started it — he passed to Gil Norman for a beautiful assist.

Ahead 41-31 at the end of the half, the Faculty began the second half with a point-making spree by Mr. Petty. Faking defenders almost literally out of their shoes, he showed he could score as well as pass, by winding his way to the basket time and again. Despite some fine shooting by Mel Inglima (21 points) and Dave Ogwyn (16 points), the Faculty began dominating the rebounds, especially the offensive boards, and the Frosh fell further and further behind.

The Faculty showed a balanced scoring attack with Petty, Norman, and Williams all hitting double figures. The Faculty out-rebounded their smaller opponents 56-43, but probably the most significant statistic in this game were the assist totals: Faculty 24, Freshmen 10!



Juniors Break 100, Imperial Tumbles

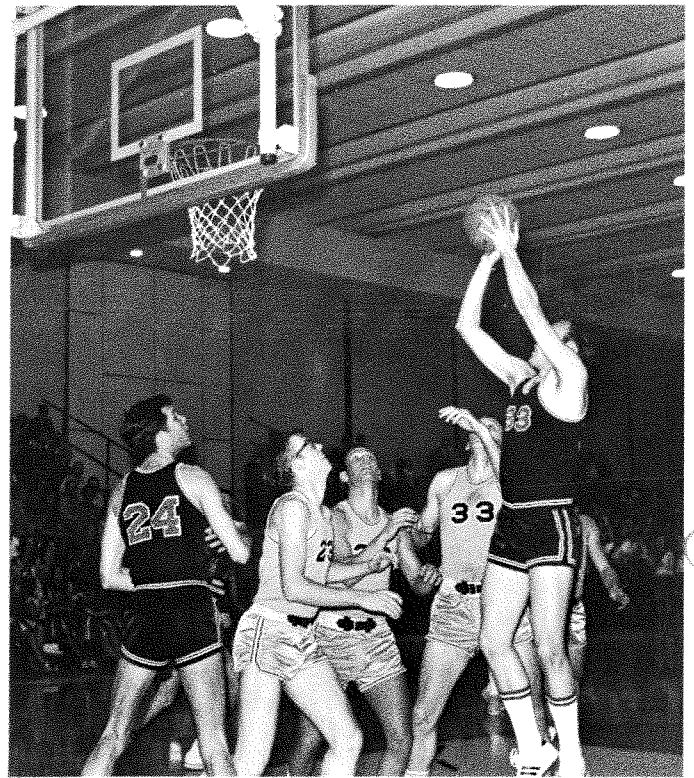
The second half of the '69-'70 season opened Wednesday afternoon with the Juniors seizing a high-scoring triumph over Imperial. It was *fast-action* basketball all the way, but height and experience proved to be the determining factor. For the first time this year in regular season play, the Juniors smashed the hundred mark leading Imperial by forty points.

As past performances have shown, height has been the key factor in the Juniors' scoring potential. When the ball gets to the big men in close, it's a sure two points. Bernie Schnippert took high point honors tallying twenty-five points — all within a few feet of the basket. And, never were there as many blocked shots! The "Jeff Smith shot-Ray Kosanke block" was a regular feature throughout the game.

But, as past games also have shown, ball handling and team coordination are not strong points of the Junior team. The starters are working together much better, but there are still a number of unnecessary turnovers. The Imperial hustlers are speedy and scrappy. They work the ball fast and handle it well. However, because of the Juniors' superior height, the Imperial offense very seldom penetrates the tough defense of the Juniors.

If the Juniors are going to be any threat the second half of the season, their offense is going to have to "gird up its loins." Against Imperial it looked good. Against the Faculty or Seniors it needs to be faster, sharper, and more precise. There are too many rushed passes and shots resulting in turnovers. With a greater "smoothness" in teamwork the Juniors may yet be an upsetting factor in the final round of the season.

If you wear gay colours and startling hats, your date hesitates to take you out. If you wear a little brown toque and a tailor-made suit, he takes you out and stares all evening at a girl in gay colours and a startling hat.



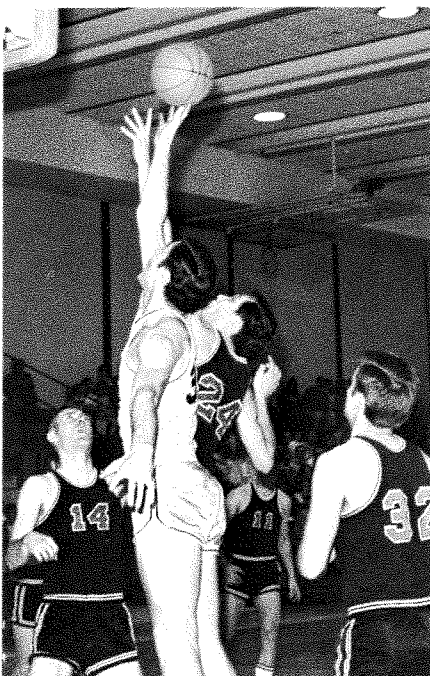
Sophomores Defeat Seniors 95-91

(Continued from page 1)

Seniors hit 5 straight baskets and suddenly the game was tied before the Sophomores had realized what had happened. Now the game became a real cliff-hanger. Would the Seniors make a comeback recovery or could the Sophs hang on for an upset victory? Ray Pyle fouled out with 8 minutes to

play and the skies looked dark and foreboding for the Senior squad. The Sophomores tightened up on defense — you could hardly see daylight between waving hands and shuffling feet as they refused to allow the Seniors an approach to the basket. Jack Sowder turned up his rheostat and took charge

of the Senior offense as he shot and rebounded to keep the game even. Paul Shumway came off the bench with 7 crucial points to help the Senior cause but nothing could stop the Sophomores as each man contributed in an all-out effort to pull off the upset of the year. The determined men-in-blue walked off the court with a surprising 95-91 over the strong Senior team.



SOPHOMORES: 95										
	FG-A	PCT	FT-A	PCT	AST	REB	PF	TP	AV	
Koerner	6-15	.40	6-8	.75	3	6	4	18	..	
Portune	5-17	.29	2-7	.29	6	5	2	12	..	
Gereaux	8-24	.33	5-6	.83	4	6	4	21	..	
Riley	6-15	.40	2-3	.66	4	11	4	14	..	
Vollmer	3-7	.43	8-9	.89	0	8	5	14	..	
Younts	3-6	.50	2-3	.66	1	6	1	8	..	
Burton	3-4	.75	2-2	1.00	0	4	0	8	..	
TOTALS	34-88	.38	27-38	.72	18	46	20	95	..	
SENIORS: 91										
	FG-A	PCT	FT-A	PCT	AST	REB	PF	TP	AV	
Sowder	11-29	.38	7-9	.78	1	3	5	29	..	
Strain	3-6	.50	0-0	.00	4	7	4	6	..	
Orban	4-14	.29	2-3	.66	3	5	4	10	..	
Pyle	11-22	.50	4-6	.66	3	14	5	26	..	
Royer	4-16	.25	2-5	.40	0	10	5	10	..	
Carnes	1-3	.33	0-0	.00	1	0	3	2	..	
Shumway	3-6	.50	1-3	.33	0	6	1	7	..	
Knapp	0-1	.00	1-2	.50	0	0	0	1	..	
TOTALS	37-97	.38	17-28	.61	12	45	27	91	..	